

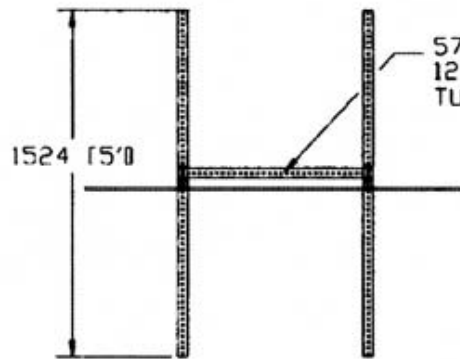
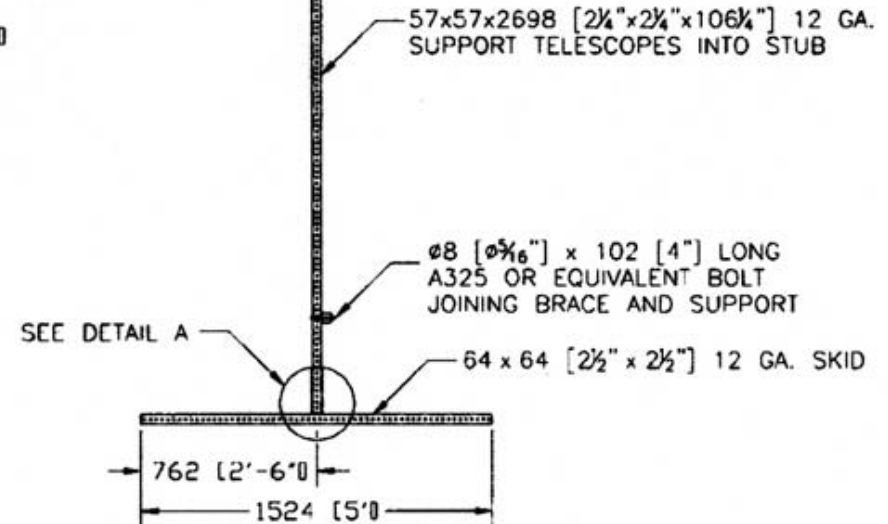
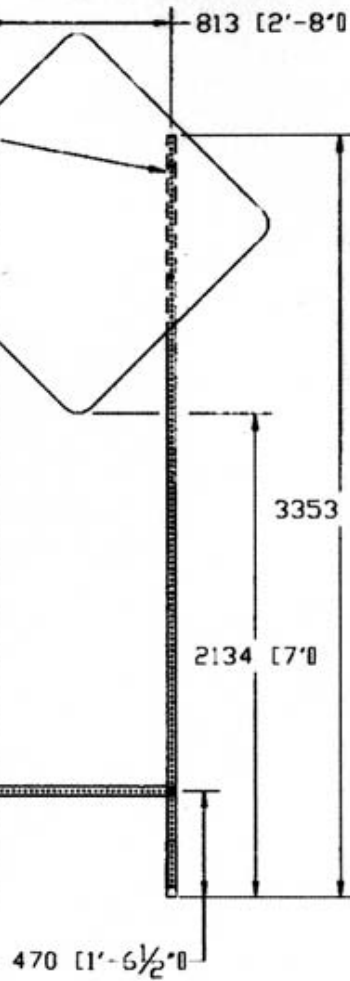
Ø8 [Ø $\frac{5}{16}$ "] x 89 [3 $\frac{1}{2}$ "] LONG A325 OR EQUIVALENT BOLT (2 PER SUPPORT) JOINING SIGN PANEL AND SUPPORTS

1219x1219x13 [4' x 4' x $\frac{1}{2}$ "] PLYWOOD OR 2 [0.08"] ALUMINUM SIGN PANEL

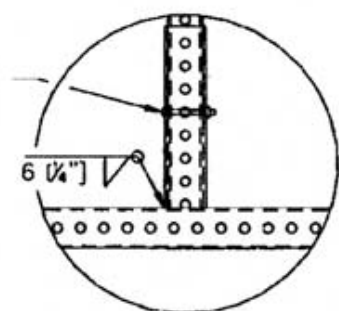
57x57x2698 [2 $\frac{1}{4}$ " x 2 $\frac{1}{4}$ " x 106 $\frac{1}{4}$ "] 12 GA. SUPPORT TELESCOPES INTO STUB

64 x 64 x 203 [2 $\frac{1}{2}$ " x 2 $\frac{1}{2}$ " x 8"] LONG 12 GA. STUB WELDED TO SKID

64 x 64 [2 $\frac{1}{2}$ " x 2 $\frac{1}{2}$ "] 12 GA. SKID



Ø8 [Ø $\frac{5}{16}$ "] x 76 [3"] LONG A325 OR EQUIVALENT BOLT (OPTIONAL)



DETAIL A

The Texas A&M University System

Revisions		
No	Date	By
1.	4/19/2005	JWK
2.		
3.		
4.		
5.		

TEXAS TRANSPORTATION INSTITUTE COLLEGE STATION, TEXAS 77843			
Project No.	Date	Drawn By	Scale
474010-9	1/04	CRM	
Crashworthy Work-Zone Traffic Control Devices			Sheet No. 1 of 1